

CLARISSA MUNICIPAL AIRPORT ZONING PLAN CLARISSA, MINNESOTA

STATE AIRPORT ZONING BOARD

APPROVAL <i>For SIGNATURES</i>	DATE
<i>OF THE ESTABLISHED</i>	
<i>ZONING AUTHORITY</i>	
APPROVAL	DATE
APPROVAL	DATE
APPROVAL	DATE

NO.	REVISIONS DESCRIPTION	DATE

I HEREBY CERTIFY THAT THIS PLAN, SPECIFICATION OR REPORT WAS PREPARED BY ME OR UNDER MY DIRECT SUPERVISION AND THAT I AM A DULY REGISTERED ENGINEER UNDER THE LAWS OF THE STATE OF MINNESOTA.

NAME *Alvin H. Moen*
DRAWN BY A.H. MOEN - HALL ENGINEERING DATE *5/19/74* REG. NO. *7065*

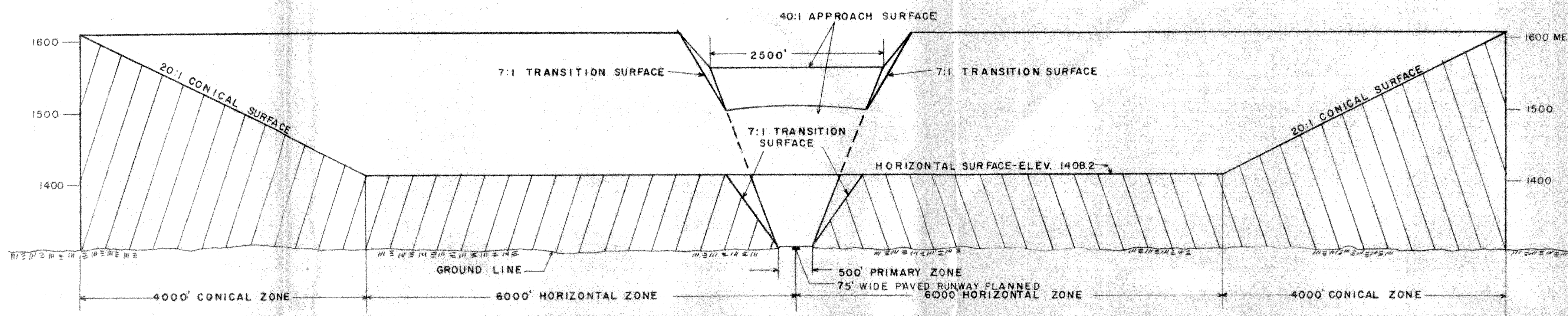


NOTES:

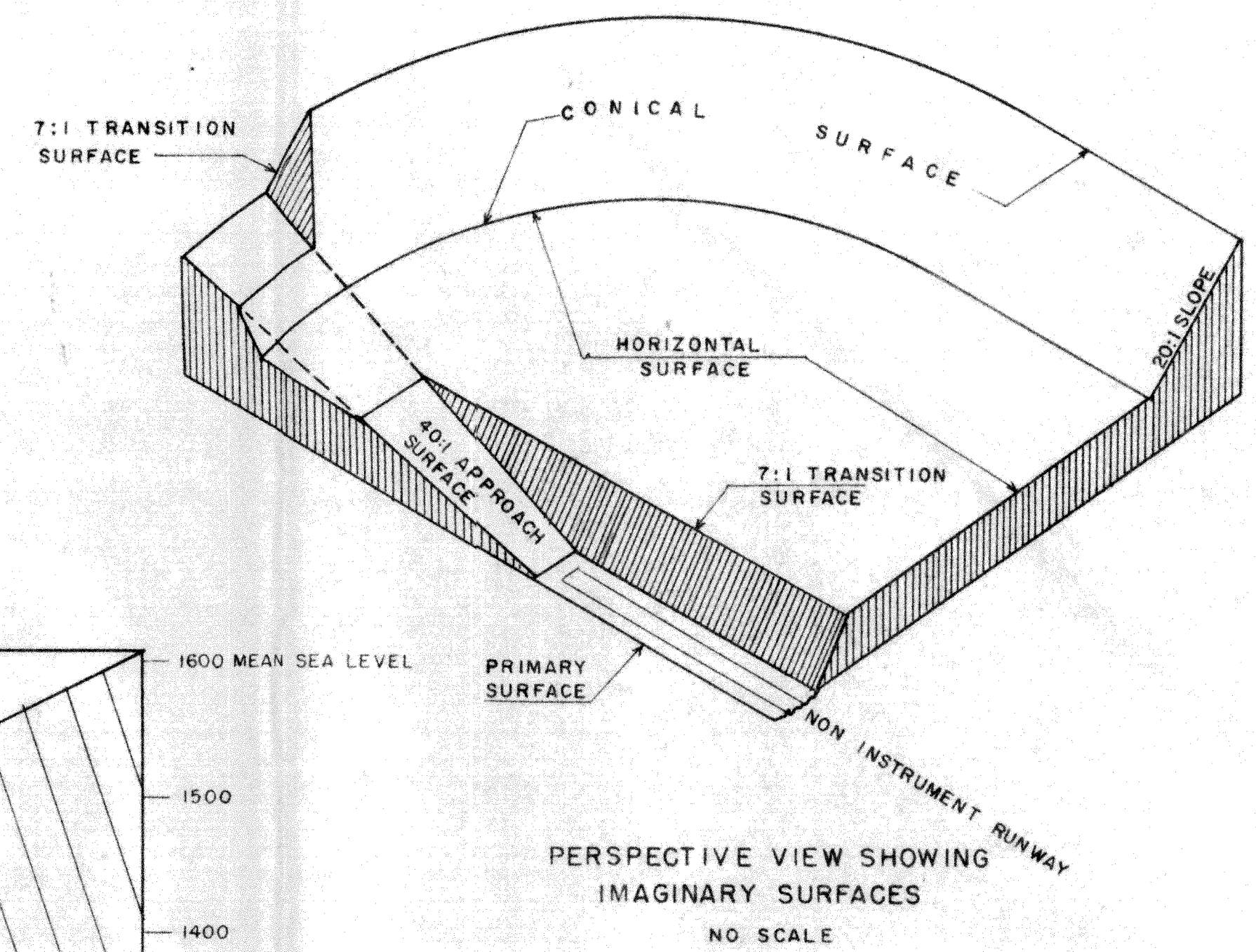
1. TOPOGRAPHIC CONTOUR INTERVALS ARE 10 FEET. DATUM IS MEAN SEA LEVEL ELEVATION.
2. THE AERIAL CONTOURS ILLUSTRATE THE HEIGHT LIMITATIONS WITHIN EACH ZONE.
3. A SLOPE SUCH AS 40:1 EXPRESSES THE HORIZONTAL DISTANCE OF 40 FEET TO THE VERTICAL DISTANCE OF 1 FOOT.
4. EXISTING TOPOGRAPHIC SYMBOLS ARE THOSE USED BY THE U.S. GEOLOGICAL SURVEY.
5. MAX. POLE PENETRATION ON WESTERLY APPROACH SURFACE = 26 FT.
6. HIGHWAY AND RAILROAD CLEARANCE ON WESTERLY RUNWAY IS NON CONFORMING.

LEGEND

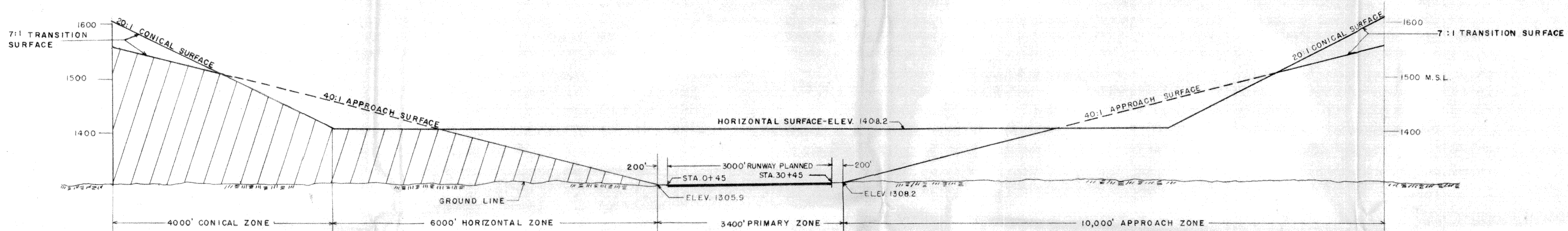
ULTIMATE RUNWAY	
ZONE BOUNDARY	
TOPOGRAPHIC CONTOURS	
AERIAL CONTOURS	



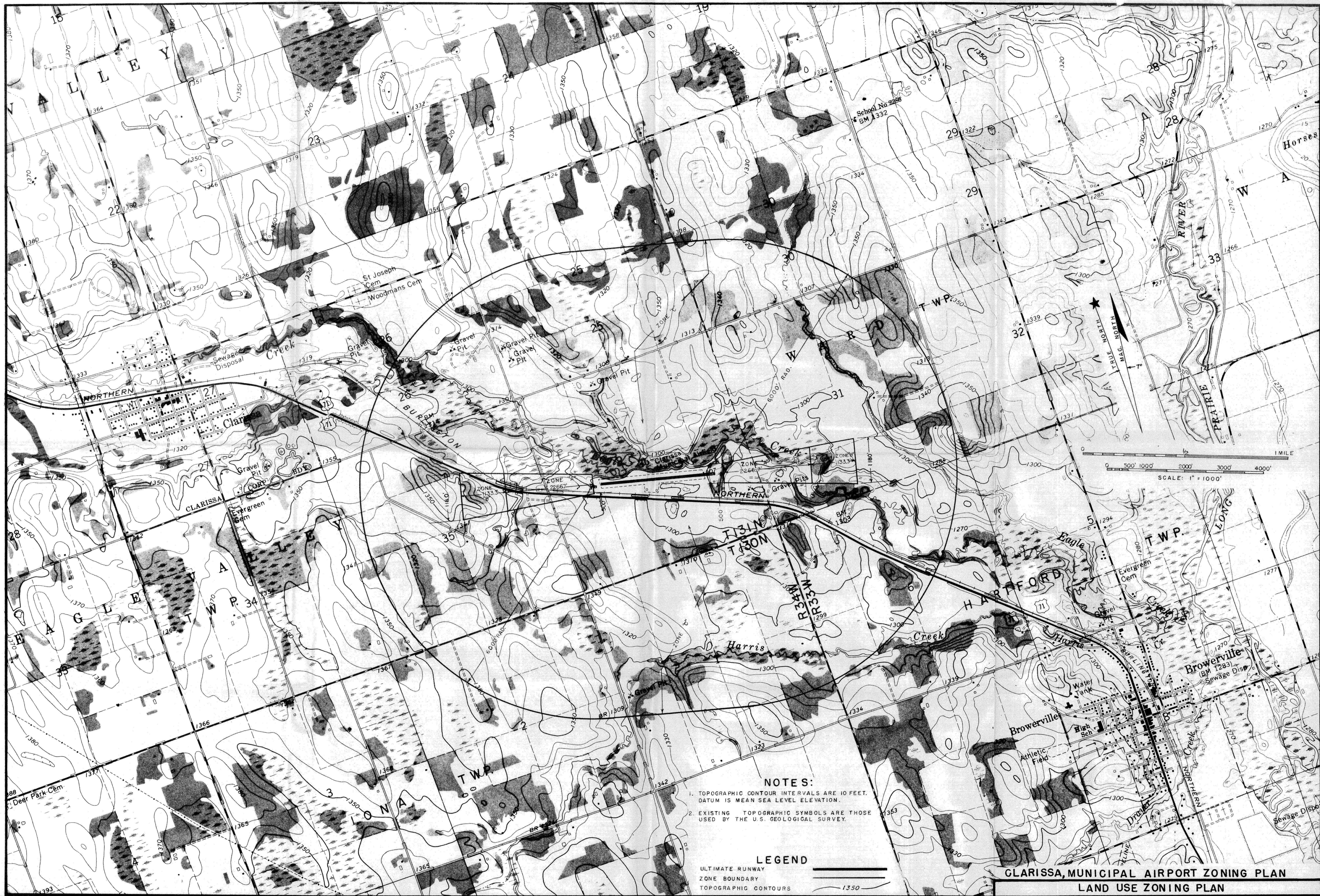
SECTION B-B
 SCALE: VERT. 1" = 100'
 HORIZ. 1" = 1000'



PERSPECTIVE VIEW SHOWING
 IMAGINARY SURFACES
 NO SCALE



SECTION A-A
 SCALE: VERT. 1" = 100'
 HORIZ. 1" = 1000'



- NOTES:**
1. TOPOGRAPHIC CONTOUR INTERVALS ARE 10 FEET. DATUM IS MEAN SEA LEVEL ELEVATION.
 2. EXISTING TOPOGRAPHIC SYMBOLS ARE THOSE USED BY THE U.S. GEOLOGICAL SURVEY.

LEGEND

ULTIMATE RUNWAY	
ZONE BOUNDARY	
TOPOGRAPHIC CONTOURS	

GLARISSA, MUNICIPAL AIRPORT ZONING PLAN
LAND USE ZONING PLAN